



DESPIECE

REV.: 1

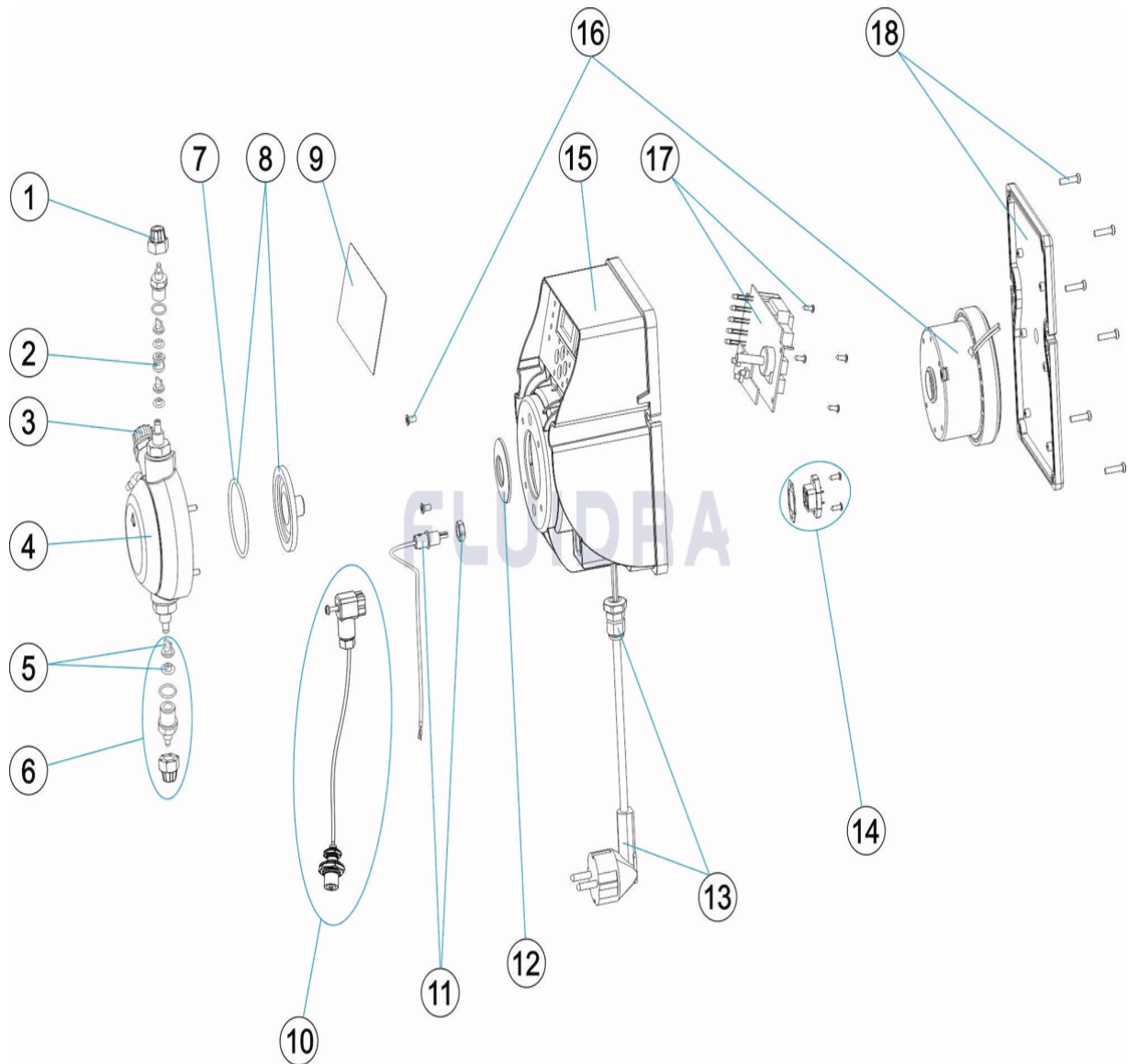
1138

FECHA: 22/10/2019

HOJA: 1/2

CODIGO 65979, 65980, 65981

DESCRIPCION: BOMBA DOSIFICADORA CLASS COMBI PH/REDOX



ESPAÑOL

POS	CODIGO	DESCRIPCION	CANTIDAD	POS	CODIGO	DESCRIPCION	CANTIDAD
1	CE08030126	TUERCA SUJECCION TUBO		10	CE08030062	SONDA DE NIVEL MA/MB	
2	CE08033111	DISTANCIADOR PURGA AIRE		11	CE08032603	CONECTOR HEMBRA BNC EXACTUS 2009	
3	CE08032308	TAPON PURGA CABEZAL CP STD		12	* CE08030531	ARANDELA PISTON 5L 7KG	
4	CE08033102	CABEZAL COMPLETO 5-10 L.		12	* CE08031121	ARANDELA PISTON 10L 5KG	
5	CE08030116	VALVULA VITON + SOPORTE		13	CE08033110	CABLE ALIMENTACION	
5	CE08030117	VALVULA SILICONA + SOPORTE		14	CE08030063	CONECTOR MACHO	
5	CE08030115	VALVULA DUTRAL + SOPORTE		15	CE08030064	CAJA BOMBA CLASS	
6	CE08030113	CUERPO RACORD + VITON		16	* CE08030921	ELECTROIMAN 2 L. 5KG	
6	CE08030114	CUERPO RACORD + SILICONA		16	* CE08030118	ELECTROIMAN COMPLETO 5L 7KG	
6	CE08030112	CUERPO RACORD + DUTRAL		16	* CE08030517	ELECTROIMAN 10L 5KG	
7	CE08030111	JUNTA TORICA CABEZAL		17	CE08032602	CIRCUITO ELECTRONICO PH/RX. 230/240V.	
8	CE08030119	MEMBRANA COMPLETA		18	CE08030067	TAPA TRASERA BOMBA	
9	CE08030060	CARATULA COMANDO					

* VER HOJA DE OBSERVACIONES



DESPIECE

REV.: 1

1138

FECHA: 22/10/2019

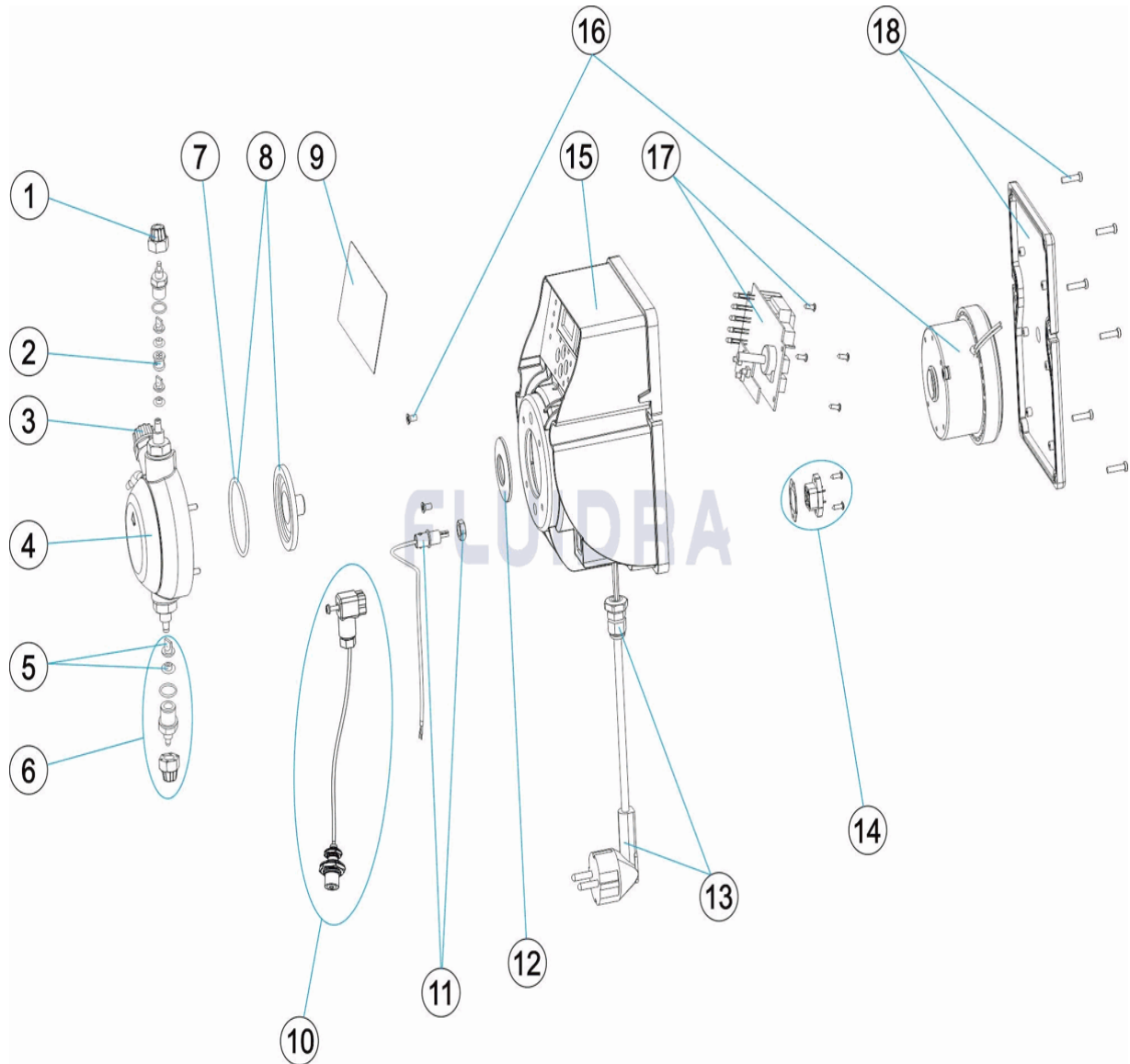
HOJA: 2/2

CODIGO **65979, 65980, 65981**DESCRIPCION: **BOMBA DOSIFICADORA CLASS COMBI PH/REDOX**

OBSERVACIONES

POS	CODIGO	OBSERVACIONES
12	* CE08030531	PARA: 65979, 65980
12	* CE08031121	PARA: 65981
16	* CE08030921	PARA: 65979
16	* CE08030118	PARA: 65980
16	* CE08030517	PARA: 65981

CODE **65979, 65980, 65981**

 DESCRIPTION: **POMPE DOSEUSE CLASS COMBI PH/REDOX**

FRANCAIS

POS	CODE	DESCRIPTION	QUANTITE	POS	CODE	DESCRIPTION	QUANTITE
1	CE08030126	ECROU DE TUBE D'ASPIRATION		10	CE08030062	SONDE DE NIVEAU MA/MB	
2	CE08033111	DISTANCIALE DE PURGE		11	CE08032603	CONNEXION FEMELLE BCN EXACTUS 200€	
3	CE08032308	BOUCHON PURGE		12	* CE08030531	RONDELLE PISTON 5L 7KG	
4	CE08033102	TETE COMPLET 5-10 L.		12	* CE08031121	RONDELLE PISTON 10L 5KG	
5	CE08030116	CLAPET VITON + SUPPORT		13	CE08033110	CABLE ALIMENTATION	
5	CE08030117	CLAPET SILICONA + SUPPORT		14	CE08030063	CONNECTEUR MÂLE	
5	CE08030115	CLAPET DUTRAL + SUPPORT		15	CE08030064	CARCASSE POMPE CLASS	
6	CE08030113	CORPS RACCORD + CLAPET VITON		16	* CE08030921	ELECTROAIMANT 2 L. 5KG	
6	CE08030114	CORPS RACCORD + CLAPET SILICONE		16	* CE08030118	ELECTROAIMANT COMPLETO 5L 7KG	
6	CE08030112	CORPS RACCORD + CLAPET DUTRAL		16	* CE08030517	ELECTROAIMANT 10L 5KG	
7	CE08030111	JOINT TORIQUE TETE		17	CE08032602	CIRCUIT ELECTRONIQUE PH/RX. 2009	
8	CE08030119	MEMBRANE COMPLETE		18	CE08030067	COUVERCLE POMPE	
9	CE08030060	BOÎTIER COMMANDES					



ÉCLATÉ

REV.: 1

1138

DATE: 22/10/2019

PAG.: 2/2

CODE **65979, 65980, 65981**DESCRIPTION: **POMPE DOSEUSE CLASS COMBI PH/REDOX**

OBSERVATIONS

POS	CODE	OBSERVATIONS
12	* CE08030531	POUR: 65979, 65980
12	* CE08031121	POUR: 65981
16	* CE08030921	POUR: 65979
16	* CE08030118	POUR: 65980
16	* CE08030517	POUR: 65981



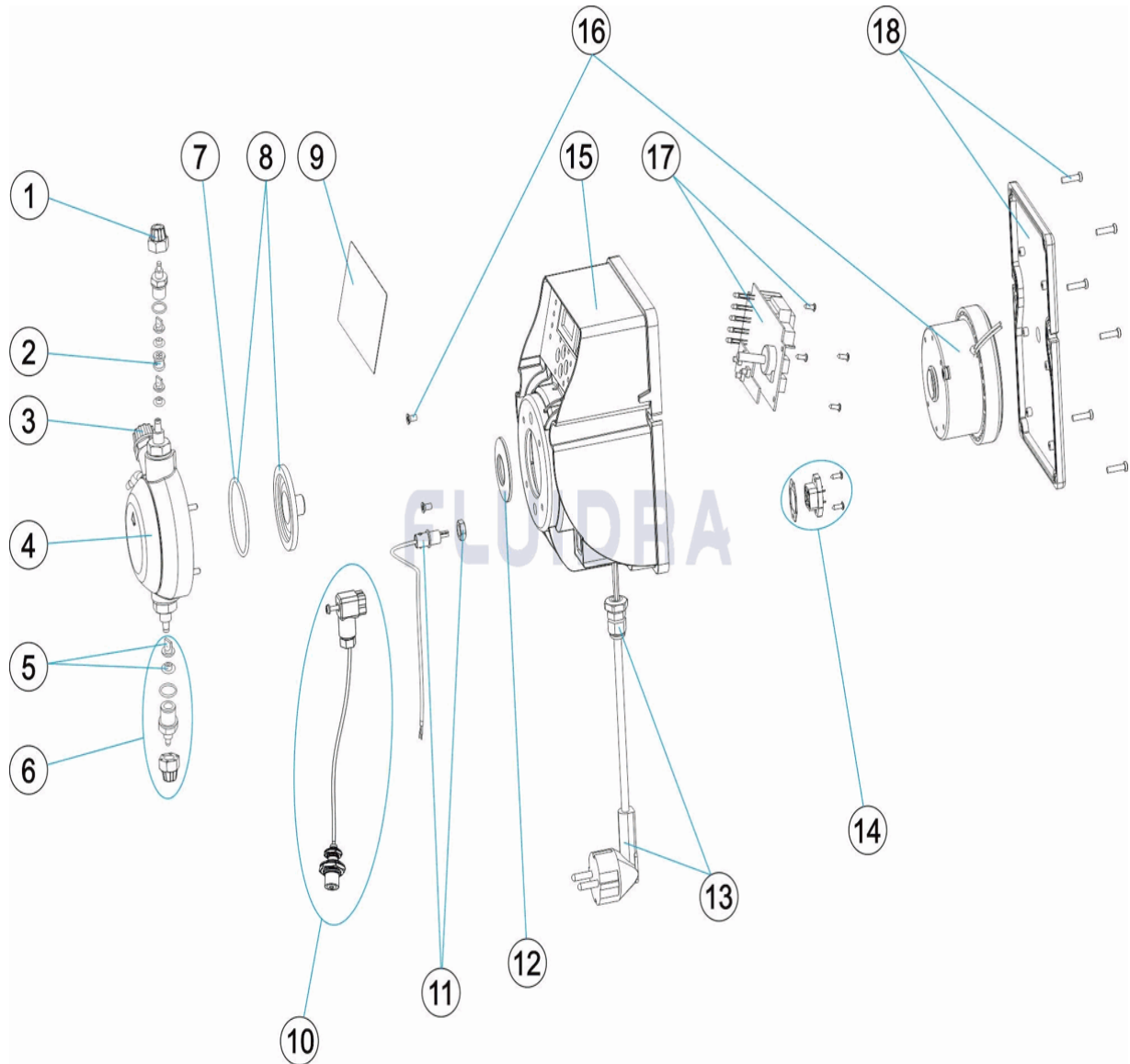
PARTS BREAKDOWN

REV.: 1
DATE: 22/10/2019
SHEET: 1/2

1138

CODE 65979, 65980, 65981

DESCRIPTION: COMBI PH/REDOX CLASS DOSING PUMP



ENGLISH

POS	CODE	DESCRIPTION	QUANTITY	POS	CODE	DESCRIPTION	QUANTITY
1	CE08030126	SUCTION TUBE NUT		10	CE08030062	LEVEL PROBE MA/MB	
2	CE08033111	DISTANCIALE FOR BLEEDING		11	CE08032603	FEMALE CONNECTOR BCN EXACTUS 2009	
3	CE08032308	DRAIN PLUG		12	* CE08030531	PISTON WASHER 5L 7KG	
4	CE08033102	COMPLETE HEAD ASSEMBLY5-10 L.		12	* CE08031121	PISTON WASHER 10L 5KG	
5	CE08030116	VITON VALVE + SUPPORT		13	CE08033110	SUPPLY CABLE	
5	CE08030117	SILICON VALVE + SUPPORT		14	CE08030063	MALE CONNECTOR	
5	CE08030115	DUTRAL VALVE + SUPPORT		15	CE08030064	PUMP BOX CLASS	
6	CE08030113	HEAD CONNECTOR BODY + VITON		16	* CE08030921	ELECTROMAGNET 2 L. 5KG	
6	CE08030114	HEAD CONNECTOR BODY + SILICON		16	* CE08030118	ELECTROMAGNET ASSEMBLY COMPLETE	
6	CE08030112	HEAD CONNECTOR BODY + DUTRAL		16	* CE08030517	ELECTROMAGNET 10L 5KG	
7	CE08030111	HEAD O RING		17	CE08032602	ELECTRONIC CIRCUIT PH/RX 2009	
8	CE08030119	DIAPHRAM COMPLETE		18	CE08030067	PUMP REAR COVER	
9	CE08030060	CONTROL FACEPLATE					

* SEE OBSERVATIONS SHEET



PARTS BREAKDOWN

REV.: 1

1138

DATE: 22/10/2019

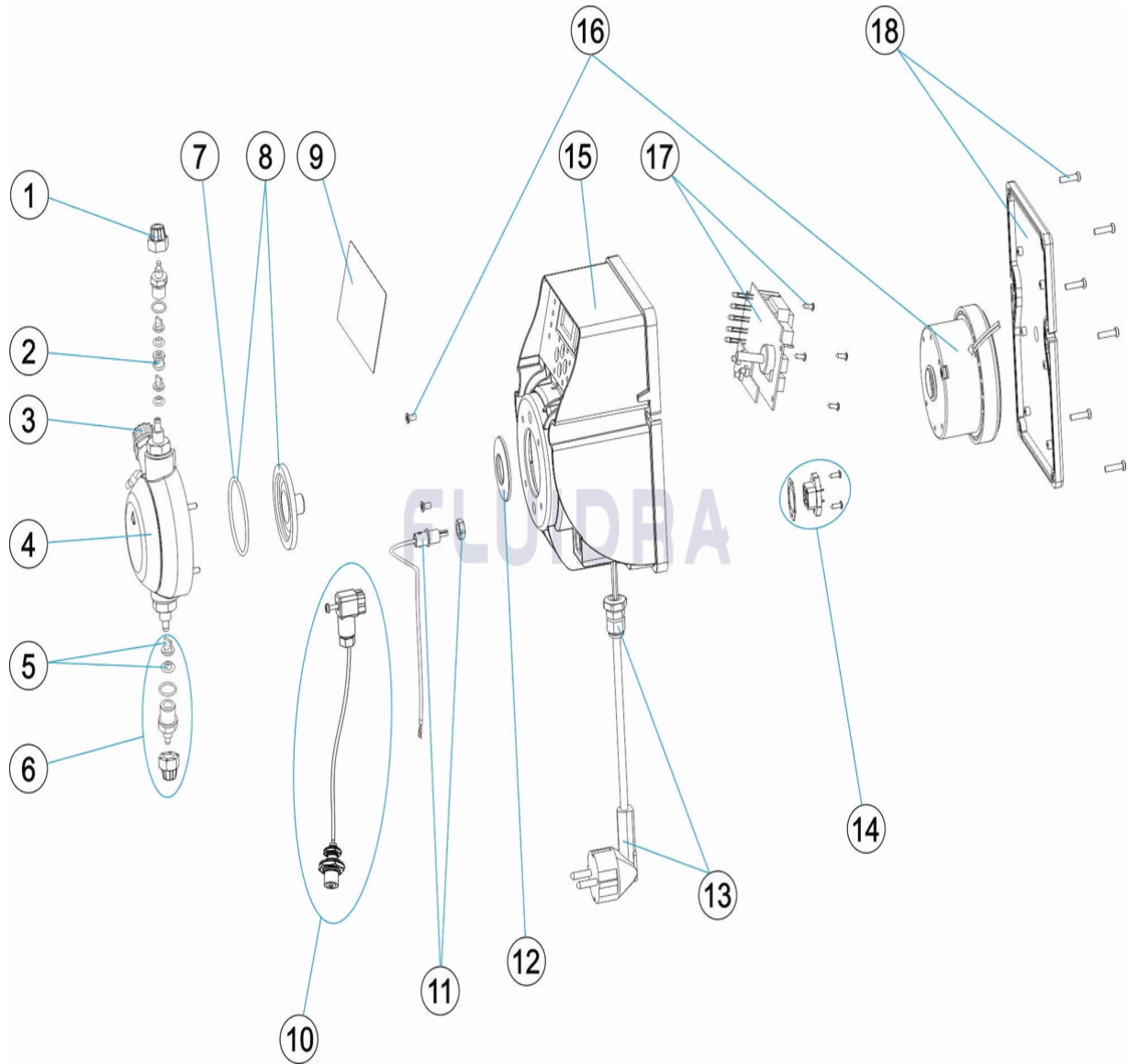
SHEET: 2/2

CODE **65979, 65980, 65981**DESCRIPTION: **COMBI PH/REDOX CLASS DOSING PUMP**

OBSERVATIONS

POS	CODE	OBSERVATIONS
12	* CE08030531	FOR: 65979, 65980
12	* CE08031121	FOR: 65981
16	* CE08030921	FOR: 65979
16	* CE08030118	FOR: 65980
16	* CE08030517	FOR: 65981

CODICE **65979, 65980, 65981**

 DESCRIZIONE: **POMPA DOSIFICATRICE CLASS COMBI PH/REDOX**

ITALIANO

POS	CODICE	DESCRIZIONE	QUANTITA'	POS	CODICE	DESCRIZIONE	QUANTITA'
1	CE08030126	GHIERA FISSAGGIO TUBO		10	CE08030062	SONDA DI LIVELLO MA/MB	
2	CE08033111	DISTANCIALE PER SPURGO		11	CE08032603	CONNETTORE FEMMINA BCN EXACTUS 20	
3	CE08032308	TAPPO SPURGO		12	* CE08030531	RONDELLA PISTONE 5L 7KG	
4	CE08033102	TESTA COMPLETA 5-10 L.		12	* CE08031121	RONDELLA PISTONE 10L 5KG	
5	CE08030116	VALVOLA + SUPPORTO		13	CE08033110	CAVO DI ALIMENTAZIONE	
5	CE08030117	VALVOLA SILICONE + SUPPORTO		14	CE08030063	CONNETTORE MASCHIO	
5	CE08030115	VALVOLA DUTRAL + SUPPORTO		15	CE08030064	CASSA POMPA CLASS	
6	CE08030113	CORPO RACCORDO + VALVOLA IN VITON		16	* CE08030921	ELETTROCALAMITA 2 L. 5KG	
6	CE08030114	CORPO RACCORDO + VALVOLA IN SILICOI		16	* CE08030118	ELETTROCALAMITA COMPLETA 5L 7KG	
6	CE08030112	CORPO RACCORDO + VALVOLA IN DUTRA		16	* CE08030517	ELETTROCALAMITA 10L 5KG	
7	CE08030111	O-RING PER TESTA		17	CE08032602	CIRCUITO ELETTRONICO PH/RX. 2009	
8	CE08030119	MEMBRANA COMPLETA		18	CE08030067	COPRIVENTOLA POMPA	
9	CE08030060	PANNELLO COMANDO					



ESPLOSO

REV.: 1

1138

DATA: 22/10/2019

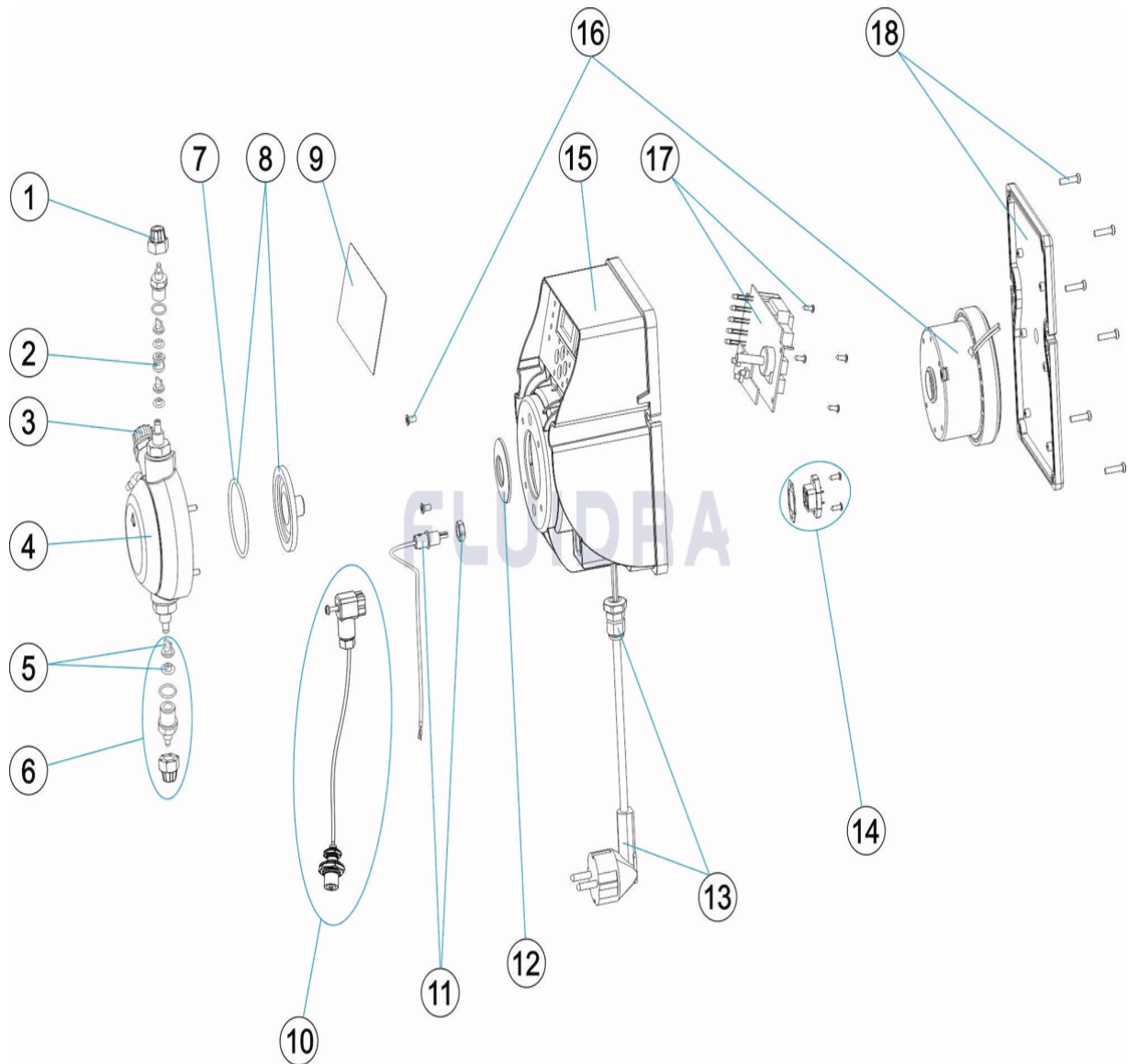
PAG.: 2/2

CODICE **65979, 65980, 65981**DESCRIZIONE: **POMPA DOSIFICATRICE CLASS COMBI PH/REDOX**

OSSERVAZIONI

POS	CODICE	OSSERVAZIONI
12	* CE08030531	PER: 65979, 65980
12	* CE08031121	PER: 65981
16	* CE08030921	PER: 65979
16	* CE08030118	PER: 65980
16	* CE08030517	PER: 65981

CODE **65979, 65980, 65981**

 BESCHREIBUNG: **DOSIERPUMPE CLASS COMBI PH/REDOX**

DEUTSCH

POS	CODE	BESCHREIBUNG	MENGE	POS	CODE	BESCHREIBUNG	MENGE
1	CE08030126	MUTTER BEFESTIGUNG ROHR		10	CE08030062	FÜLLSTANDSENSOR MA/MB	
2	CE08033111	DISTANZSTÜCK ENTLÜFTUNG		11	CE08032603	ANSCHLUSSMUFFE BNC EXACTUS 2009	
3	CE08032308	ABLASSSTOPFEN KOPFSTÜCK CP STD		12	* CE08030531	KOLBENSCHIBE 5 L 7 KG	
4	CE08033102	KOPFSTÜCK KOMPLETT 5 - 10 L		12	* CE08031121	KOLBENSCHIBE 10 L 5 KG	
5	CE08030116	VENTIL VITON MIT HALTERUNG		13	CE08033110	VERSORUNGSKABEL	
5	CE08030117	VENTIL SILIKON MIT HALTERUNG		14	CE08030063	STECKER	
5	CE08030115	VENTIL DUTRAL MIT HALTERUNG		15	CE08030064	PUMPENGEHÄUSE CLASS	
6	CE08030113	VENTILSATZ MIT VITON		16	* CE08030921	ELEKTROMAGNET 2 L 5 KG	
6	CE08030114	VENTILSATZ MIT SILIKON		16	* CE08030118	ELEKTROMAGNET KOMPLETT 5 L 7 KG	
6	CE08030112	VENTILSATZ MIT DUTRAL		16	* CE08030517	ELEKTROMAGNET 10 L 5 KG	
7	CE08030111	O-RING KOPFSTÜCK		17	CE08032602	PLATINE SCHALTKREIS PH/RX. 230/240 V	
8	CE08030119	KOMPLETTMEMBERAN		18	CE08030067	ABDECKUNG HINTEN PUMPE	
9	CE08030060	BEDIENFELD STEUERUNG					



EINZELTEILE

ÜBER.: 1

1138

DATUM: 22/10/2019

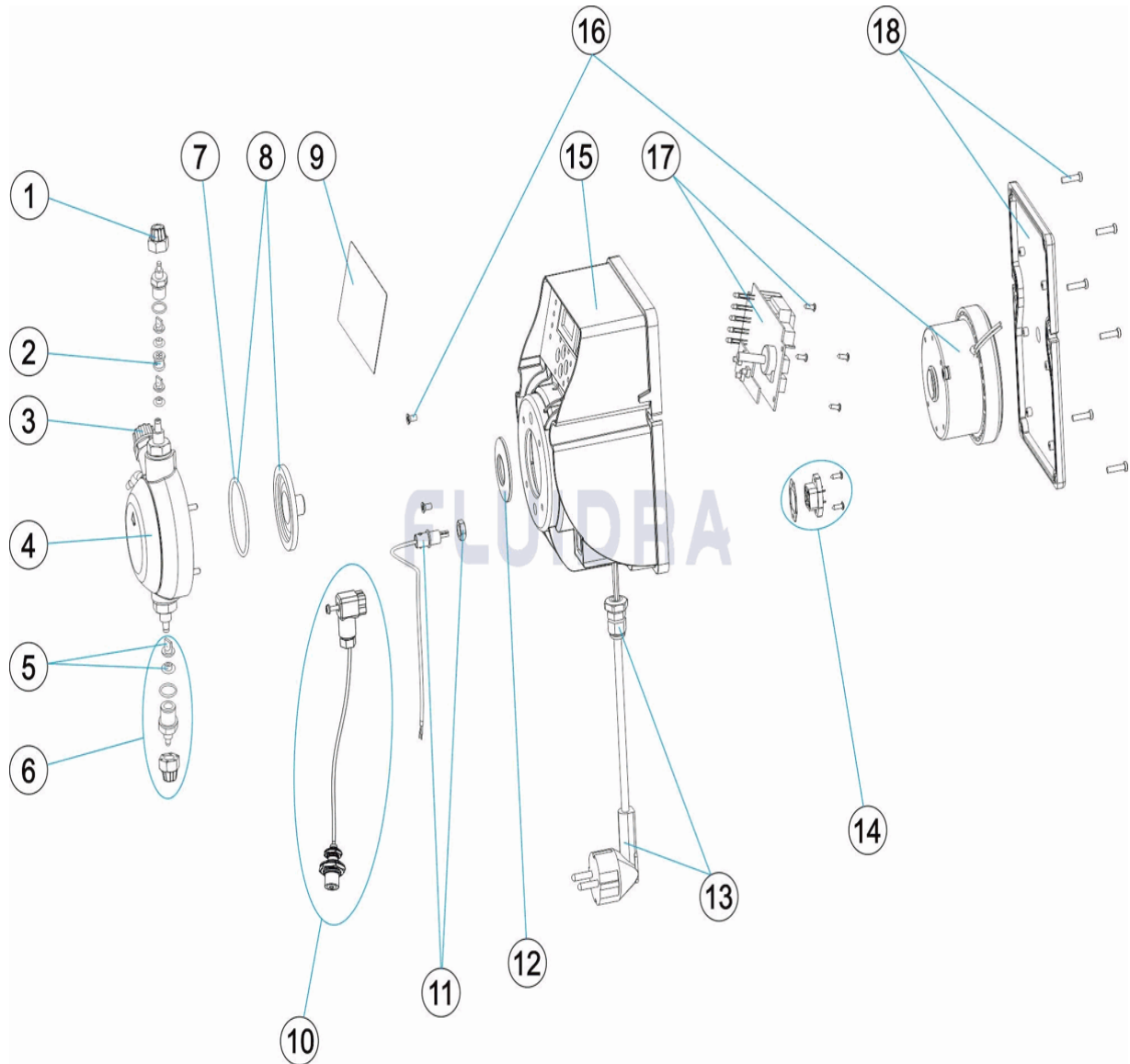
BLATT: 2/2

CODE **65979, 65980, 65981**BESCHREIBUNG: **DOSIERPUMPE CLASS COMBI PH/REDOX**

HINWEISE

POS	CODE	HINWEISE
12	* CE08030531	FÜR: 65979, 65980
12	* CE08031121	FÜR: 65981
16	* CE08030921	FÜR: 65979
16	* CE08030118	FÜR: 65980
16	* CE08030517	FÜR: 65981

CODIGO **65979, 65980, 65981**

 DESCRIÇÃO: **BOMBA DOSEADORA CLASS COMBI PH/REDOX**


PORTUGUES

POS	CODIGO	DESCRIÇÃO	JANTIDADE	POS	CODIGO	DESCRIÇÃO	JANTIDADE
1	CE08030126	PORCA SUJEIÇÃO TUBO		10	CE08030062	SONDA NÍVEL MA/MB	
2	CE08033111	DISTANCIADOR DO PURGE		11	CE08032603	LIGAÇÃO FÊMEA BCN. EXACTUS 2009	
3	CE08032308	TAMPÃO PURGA		12	* CE08030531	ANILHA PISTON 5L 7KG	
4	CE08033102	CABEÇAL COMPLETO 5-10 L.		12	* CE08031121	ANILHA PISTON 10L 5KG	
5	CE08030116	VÁLVULA VITON + SUPORTE		13	CE08033110	CABO ALIMENTAÇÃO	
5	CE08030117	VÁLVULA SILICONE + SUPORTE		14	CE08030063	LIGAÇÃO MACHO	
5	CE08030115	VÁLVULA DUTRAL + SUPORTE		15	CE08030064	CAIXA BOMBA CLASS	
6	CE08030113	CORPO RACORD + VITON		16	* CE08030921	ELECTROIMAN 2 L. 5KG	
6	CE08030114	CORPO RACORD + SILICONE		16	* CE08030118	ELECTROIMAN COMPLETO 5L 7KG	
6	CE08030112	CORPO RACORD + DUTRAL		16	* CE08030517	ELECTROIMAN 10L 5KG	
7	CE08030111	JUNTA TORICA CABEÇAL		17	CE08032602	CIRCUITO ELECTRONICO PH/RX. 2009	
8	CE08030119	MEMBRANA COMPLETA		18	CE08030067	TAMPA TRASEIRA BOMBA	
9	CE08030060	PAINEL COMANDO					



ITEM

REV.: 1

1138

DATA: 22/10/2019

FOLHA: 2/2

CODIGO **65979, 65980, 65981**DESCRIÇÃO: **BOMBA DOSEADORA CLASS COMBI PH/REDOX**

OBSERVAÇÕES

POS	CODIGO	OBSERVAÇÕES
12	* CE08030531	PARA: 65979, 65980
12	* CE08031121	PARA: 65981
16	* CE08030921	PARA: 65979
16	* CE08030118	PARA: 65980
16	* CE08030517	PARA: 65981